

Spinelli Kilcollin

2026

Spinelli Kilcollin
Bucherer Lookbook

About Spinelli Kilcollin

Spinelli Kilcollin was founded in 2010 by partners Yves Spinelli and Dwyer Kilcollin. The brand launched from their East Los Angeles garage with an innovative series of linked rings. Created to be stacked or worn across several fingers, the design is now synonymous with the Spinelli Kilcollin aesthetic.

Over time, the brand has evolved and expanded to include new textures, forms, and materials, all while maintaining the core identity of SK connectedness.





VULCAN

Two Band Styles

Inspired by the texture of well-loved rings, these yellow gold Vulcan styles partner hammered-style textures with polished metal and black diamond.



Agon YG Vulcan

\$7,900

G2-AGOYVLC



Osric YG Noir Vulcan

\$8,400

G2-OSYGNRV





Two Band Styles

A celebration of complementary duality, these two-band styles contrast 18k white gold pavé with yg pavé or solid white gold bands.



Cadence

\$12,900
G2-CADNC



Virgo Blanc Pavé

\$18,900
G2-VIRBLPA

Three Band Styles

These classic silhouettes pair luminous bands of solid 18k yellow gold with pavé-set yg bands, making for some of our most popular styles.



Norah YG Pavé

\$11,900
G3-SONYG



Sonny YG

\$5,900
G3-SONYG





Four Band Styles

With their modular design that can be stacked or worn across multiple fingers, four band styles are as anchored in luxury as they are designed for the fluidity of the everyday.



Halley

\$14,900
G4-HAL



Pisces YG

\$5,500
G4-PISYG



YG Emerald Edit

Familiar SK styles interpreted in rich 18k yellow gold and resplendent emeralds.



Vesta YG Emerald

\$4,200
N-VESYGEM



Zahra YG Emerald

\$3,900
E-ZAYGEM



Zahra Emerald Cut YG Vert

\$6,900
E-ZAYGEMEM





Pink Sapphire Edit

Styles that celebrate the beauty of sapphires in hues of rose and pastel pink.



Norah Rose

\$8,900

G3-NORR



Zahra Max YG Pastel

\$3,300

E-ZAMAXYGPS



Gravity YG Pavé Rose

\$6,900

N-GRYPVR

Linked Hoop Earrings

These earrings represent classic and bold takes on the classic hoop earring. Each lightweight silhouette features tactile annulets and can also be worn as a micro hoop and necklace charm.



Asha YG Pavé

\$8,500

E-ASHYGPV



Echo YG Pavé

\$11,900

E-ECHYGPV







The ZAHRA

The Zahra Hoop Earrings display a streamlined silhouette and comfort closure in 18k gold. Three annulets adorn each hoop, the center of which bears a drop charm for added contrast and movement.



Zahra Emerald Cut YG WD

\$11,900

E-ZAYGEMWD



Zahra YG WD

\$4,100

E-ZAYGWD



Zahra Pave YG WD

\$4,900

E-ZAPVYGWD



Zahra WG WD

\$4,100

E-ZAWGWD

The GRAVITY ARC

The Gravity Arc Necklace pairs our popular Gravity Chain in 18k yellow gold with a central bar that features three unfixed annulets for a tactile experience.



Gravity YG Pavé Arc

\$8,200

N-GRYGPV





The VESTA

This style features a trio of full-round annulets crafted from 18k yellow gold with pavé-set white diamonds. The Vesta Chain measures 18 inches in length, with an included link for a 16 inch length adjustment.



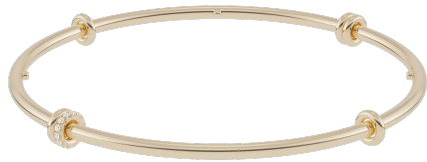
Vesta YG WD

\$5,200

N-VESYGWD

The KINI Bangle

The Kini Bangle is comprised of a single, full-round bangle. Its orbiting annulets are both movable and designed to stay visible, no matter the orientation.



Kini YG Pavé Bangle

\$5,400

B-KINYGPV775





The CHRYSA Bangles

The Chrysa Bangle brings the signature SK linked design to wristwear, joining three 18k yellow gold bangles with pavé-set connectors. Three orbiting annulets complement the center band.



Chrysa YG Pavé Bangle

\$15,000

B-CHRYGPV775