



CORPORATE GIFTS AND AWARDS
FINE WATCHES, JEWELRY
AND ACCESSORIES
FROM WORLD RENOWNED
BRANDS

WHY TOURNEAU?

MORE THAN JUST A WATCH Think of the watch you purchase from Tourneau Corporate Sales as a trophy the recipient can wear every day. It's a gift with value beyond the price tag, letting the wearer know they are appreciated and their work prized.

INSTILLING LOYALTY The average watch wearer looks at their timepiece about 40 times per day. Give them a name and a look that truly conveys your appreciation and you can be sure they'll never forget it.

A DAILY ACCESSORY A gift from our program serves as a near constant reminder of how one's work is valued—and of the company that values it—every day for generations.

SYMBOLS OF SUCCESS & STATUS Our watches, jewelry and accessories are symbols of success your customers and employees will be proud to show off.

PERSONAL, FASHIONABLE, FUNCTIONAL Many of the timepieces we offer feature functions that range from calendars to chronographs. And with everything from glittering diamond dials to sporty rubber straps, there's a look to match every personal style.

A LASTING IMPRESSION Whether you're honoring a long-time employee's years of service or rewarding customers for their loyalty, one of our products will deliver the lasting impression you're looking for.

PERSONALIZATION Make it truly yours with a company logo engraved on the caseback, personalized engraving or even a company logo dial imprint available on some models.



TOURNEAU PROMISE

THE TOURNEAU CORPORATE ADVANTAGE From its humble beginnings in the early 1900s, Tourneau has grown into an internationally recognized brand, an authorized agent for all major Swiss watch brands and the undisputed authority in the watch industry.

WORLD'S LARGEST SELECTION Our Corporate Sales Division offers over 8,000 styles of watches and jewelry from the leading names in the industry. With prices ranging from \$50 to \$50,000, we're guaranteed to have a piece to fit every budget.

RANGE OF PRODUCT Watches are only the beginning. We also offer fine jewelry, writing instruments and personal accessories from world-renowned manufacturers.

5-YEAR GUARANTEE We know your watch is something you'll cherish forever, which is why we offer an extended warranty beyond the manufacturer's—up to five years. And with the largest authorized service center in the country, you know your valued timepiece is in good hands.

FREE LIFETIME BATTERY REPLACEMENT Let us keep your timepiece ticking forever. All quartz watches purchased from Tourneau Corporate Sales are eligible for free battery replacement for the life of the timepiece with copy of your Tourneau Warranty Booklet.

GIFT WRAP Complimentary gift wrapping is available upon request.

EXPERIENCED CUSTOMER SERVICE Our staff of experienced Corporate Gift Sales Managers and Customer Service Representatives understand the unique demands and requirements of the corporate gift marketplace. Count on their expertise to help you find the perfect piece for you and to deliver it on time.

From time to time, we make our mailing list available to carefully screened companies whose products might be of interest to you. If you do not wish to receive these mailings, please send an e-mail to corporatesalesdiv@tourneau.com. Your opt out request will be processed within 30 days of the date it was received. Once you have opted out, you do not need to do so again. For more information on our privacy policy, please visit our website at www.tourneau.com. We also want to make sure our mailings are correct. If you are receiving duplicate catalogs or we are using an incorrect address, or you no longer wish to receive our catalogs, send an e-mail to corporatesalesdiv@tourneau.com. Prices subject to change. Not responsible for typographic errors. Some watches enlarged to show detail. Tourneau and Tourneau Watch Gear are registered trademarks. ©2011, Tourneau, LLC



CORPORATE GIFTS AND AWARDS
FINE WATCHES, JEWELRY
AND ACCESSORIES
FROM WORLD RENOWNED
BRANDS



TAGHeuer
SWISS AVANT-GARDE SINCE 1860



A



B



E



F



C



D

- A FORMULA 1**
41mm Stainless steel case and bracelet, white dial. Quartz.
- B FORMULA 1**
42mm Alarm watch, stainless steel case and bracelet, black dial. Quartz.
- C FORMULA 1**
44mm Stainless steel case and bracelet, black chronograph dial, tachymetre. Automatic.
- D FORMULA 1**
32mm Ceramic and steel case and bracelet, white diamond dial. Quartz.
- E AQUARACER**
40.5mm Stainless steel case and bracelet, black dial. Quartz.
- F AQUARACER**
40.5mm Stainless steel case and bracelet, silver dial. Quartz.
- G AQUARACER**
43mm Stainless steel case and bracelet, black chronograph dial and steel bezel. Quartz.



G



TAGHeuer
SWISS AVANT-GARDE SINCE 1860



H



I



K



L



J

H AQUARACER
40.5mm Stainless steel case and bracelet, blue dial. Automatic

I AQUARACER
27mm Steel and yellow gold case and bracelet, silver dial. Quartz

J AQUARACER
32mm Stainless steel case and bracelet, silver diamond dial. Quartz

K LINK
40mm Stainless steel case and bracelet, black dial. Automatic.

L CARRERA
39mm Stainless steel case and bracelet, anthracite dial. Automatic

M CARRERA
41mm Stainless steel case and bracelet, tachymetre, day-date, black chronograph dial. Automatic

N CARRERA
28mm Stainless steel case and bracelet, mother-of-pearl dial. Automatic

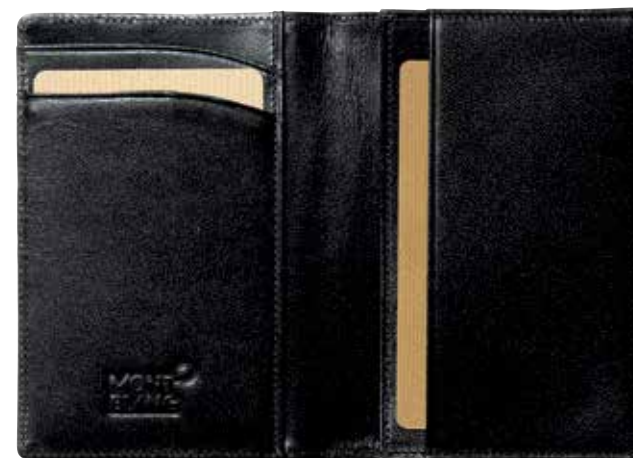


M



N

- A SAW RED GOLD-PLATED RESIN**
StarWalker Red Gold Resin Fineliner with a black precious resin barrel and cap, floating Montblanc emblem in transparent cap-top, red gold-plated clip and rings
- B MEISTERSTÜCK**
Meisterstück Classique Rollerball in deep black precious resin with gold-plated clip and rings, white star emblem on top of cap
- C SAW MIDNIGHT BLACK RESIN**
StarWalker Midnight Black Ballpoint pen with twist mechanism, black precious resin with ruthenium-plated clip and rings, floating Montblanc emblem in transparent cap-top
- D CRUISE COLLECTION PT BLACK**
Ballpoint pen, black precious resin with platinum-plated clip and rings
- E MEISTERSTÜCK PLATINUM LINE**
Meisterstück Classique Ballpoint pen with twist mechanism in deep black precious resin with platinum-plated clip and rings, white Montblanc emblem on top of cap



- F POCKET HOLDER 6CC BLACK**
10x8cm pocket card holder made of black European full-grain cowhide with jacquard lining, 6 pockets for credit cards
- G CUFF LINKS, ROUND, STEEL, SWIVEL STAR, LACQU**
Iconic cuff links. Round stainless steel cufflinks featuring Montblanc emblem, diameter approximately 16mm
- H TIMEWALKER STEEL**
39mm stainless steel case with black dial, automatic movement with date display on a stainless steel bracelet
- I STAR CLASSIQUE STEEL**
39mm stainless steel case with white dial and small seconds hand, automatic movement on a stainless steel bracelet



A



B



E



F



C



D



G



H

- A** **PELAGOS**
Self-winding mechanical movement, waterproof to 500 m, 42 mm steel and titanium case.Shown on titanium bracelet. Additional rubber strap and extension link supplied with watch.
- B** **FASTRIDER CHRONOGRAPH**
Self-winding mechanical movement, waterproof to 150 m, 42 mm steel case. Shown on leather strap with folding clasp and safety catch. Additional fabric strap supplied with watch.

- C** **FASTRIDER CHRONOGRAPH**
Self-winding mechanical movement, waterproof to 150 m, 42 mm steel case. Shown on steel bracelet. Additional fabric strap supplied with watch.
- D** **HERITAGE CHRONO**
Self-winding mechanical movement, waterproof to 150 m, 42 mm steel case. Shown on steel bracelet. Additional fabric strap supplied with watch.

- E** **GLAMOUR DATE**
Self-winding mechanical movement, waterproof to 100 m, 31 mm steel case. Shown on steel bracelet.
- F** **GLAMOUR DOUBLE DATE**
Self-winding mechanical movement, waterproof to 100 m, 42 mm steel case. Shown on steel bracelet.

- G** **GRANTOUR DATE**
Self-winding mechanical movement, waterproof to 150 m, 42 mm steel case. Shown on steel bracelet.
- H** **HERITAGE BLACK BAY**
Self-winding mechanical movement, waterproof to 200 m, 41 mm steel case. Shown on aged leather strap with folding clasp and safety catch. Additional fabric strap supplied with watch.



A CLASSIC CHAIN SILVER BRACELET
Sterling silver Knot Station bracelet

B DOT GOLD & SILVER EARRINGS
Sterling silver Diagonal Square earrings with gold dots

C BAMBOO SILVER LAVA NECKLACE
Sterling silver small round pendant with Black Sapphires. Adjustable 16"-18"

D CLASSIC CHAIN SILVER LAVA BRACELET
Sterling silver chain bracelet with Amethyst clasp

E BAMBOO SILVER NECKLACE
Sterling silver large round interlocking pendant on chain. Adjustable 18"-20"



A



B



C



D

A CLASSIMA
39mm Stainless steel case, white Roman dial with applique numerals on a black alligator strap. Water resistant to 50m. Quartz

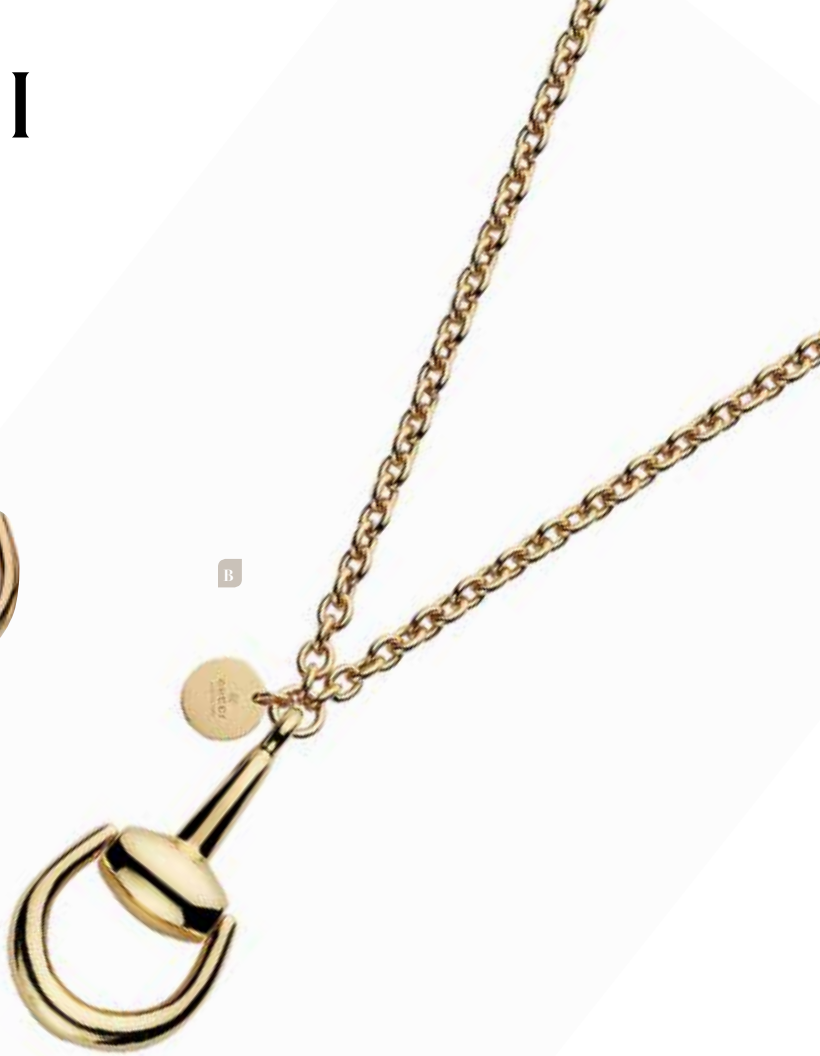
B CLIFTON
43mm Moon phase watch with a stainless steel case, Sun stain-finished silver dial on a black alligator strap. Water resistant to 50m. Automatic movement.

C HAMPTON
Ladies 30mm Stainless steel case and bracelet, mother-of-pearl diamond dial with date window at 3 o'clock. Water resistant to 50m. Quartz

D PROMESSE
Ladies 30mm Stainless steel case and bracelet, mother-of-pearl dial, diamond set oval bezel. Water resistant to 50m. Quartz



A



B

- A HORSEBIT EARRINGS**
18kt yellow gold.
- B HORSEBIT NECKLACE.**
Necklace in 18kt yellow gold.
- C BAMBOO COLLECTION**
Medium bracelet in 18kt yellow gold, pink gold, or white gold with spring mechanism.



C



D



E



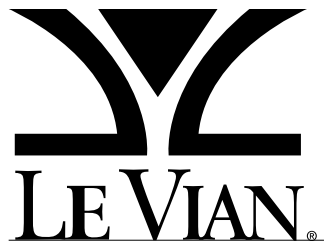
F



G

- D INTERLOCKING COLLECTION**
Black PVD case with anthracite sun-brushed dial, web and black leather strap.
- E G-TIMELESS COLLECTION**
Black PVD case with black diamond pattern dial, black and green-red-green web nylon strap.

- F G-TIMELESS COLLECTION**
Steel case and pink gold PVD bezel with black diamond pattern dial, steel and pink gold PVD bracelet.
- G G-TIMELESS COLLECTION**
Steel case and pink gold PVD bezel with black diamond pattern dial, steel and pink gold PVD bracelet.



C



B



A

D



E



F



- A CHOCOLATE & WHITE DIAMOND PENDANT**
14K Chocolate & White Diamond Pendant on a white gold 18-inch necklace (.27ct).
- B 14K DIAMOND FIRE OPAL OVAL PENDANT**
14K Rose Gold Fire Opal Pendant (.95ct) with chocolate and white diamonds on a rose gold 18-inch necklace (.44ct).
- C DIAMOND AQUAMARINE PENDANT**
14K Rose Gold cushion cut Aquamarine (1.25ct) & Diamond (.41ct) pendant on a rose gold 18-inch necklace.
- D CHOCOLATE & WHITE DIAMOND X PENDANT**
14K Rose Gold Chocolate & White Diamond Pendant on a rose gold 18-inch necklace (.63ct).
- E CHOCOLATE & WHITE DIAMOND BUCKLE PENDANT**
14K Chocolate & White Diamond Pendant on a yellow gold 18-inch necklace (.50ct).
- F CHOCOLATE & WHITE DIAMOND SWIRL EARRINGS**
14K Rose Gold Swirl Earrings with chocolate & white diamonds (1.15ct).

RAYMOND WEIL

GENEVE



A



B



C



D

- A TANGO**
28mm Swiss Quartz movement. Stainless steel and yellow gold PVD plating. White dial with Roman numerals/date calendar.
- B TANGO**
39mm Swiss Quartz movement. Stainless steel and yellow gold PVD plating. White dial with Roman relief numerals/date calendar.
- C TOCATTÀ**
39mm Swiss Quartz movement. Stainless steel bracelet. White dial with Roman relief numerals/date calendar.
- D TOCATTÀ**
29mm Swiss Quartz movement. Stainless steel bracelet. White dial with Roman relief numerals/date calendar.



A



B



C



D

A THE TANGENT
47mm all Black Swiss made quartz watch. Stainless Steel case and bezel. Tapered custom solid Stainless Steel 3 link bracelet. Double locking clasp.

B THE 48-20 CHRONO ALL GUNMETAL
48mm quartz watch. Solid Stainless Steel case and unidirectional rotating bezel with countdown timer. Stainless steel 3 link bracelet with double locking clasp.

C THE DIPLOMAT
45mm All black Swiss made quartz watch. Stainless steel case with unidirectional stainless steel bezel. Stainless steel bracelet.

D THE SENTRY CHRONO
42mm all Black quartz watch Solid Stainless Steel case. Tapered solid stainless steel 3 link bracelet with double locking clasp.



A



B

A TNY AVIATOR
Stainless steel 40mm case, black dial, automatic movement, black calf strap.

B TNY SERIES 35
Stainless steel 35mm case, mother of pearl dial with diamond bezel (0.7ct), Swiss quartz movement, alligator strap.

C TNY SERIES CHRONO 44
Stainless steel 44mm case, chronograph, black dial with 9 Arabic figures, ETA 2894 movement, black rubber strap.



C



CORPORATE GIFTS AND AWARDS
FINE WATCHES, JEWELRY
AND ACCESSORIES
FROM WORLD RENOWNED
BRANDS




TOURNEAU
SINCE 1900

For inquiries or more information, please contact corporatesalesdiv@tourneau.com or visit tourneaucorporatesales.com